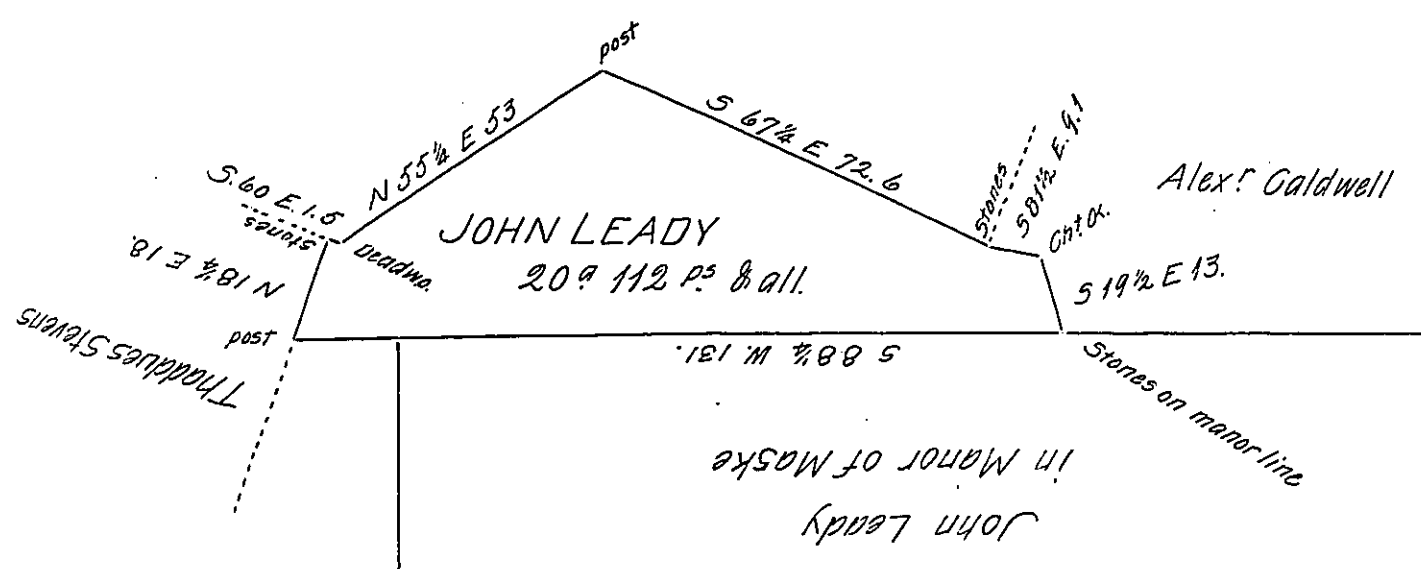


heirs of John Hartman



Situate in Franklin Township Adams County Surveyed May 30th 1829 in pursuance
of a Warrant for 20^a dated May 28th 1829 containing twenty acres one hundred
& twelve acres & all w.

By Saml Sloan D.S.

To Gabriel Hester Esq.
Surveyor Genl

IN TESTIMONY that the above is a copy of the original remaining on file in
the Department of Internal Affairs of Pennsylvania, made
conformably to an Act of Assembly approved the 16th day of
February, 1833, I have hereunto set my Hand and caused
the Seal of said Department to be affixed at Harrisburg,
this second day of October 1905.

Goac D Brown
Secretary of Internal Affairs.